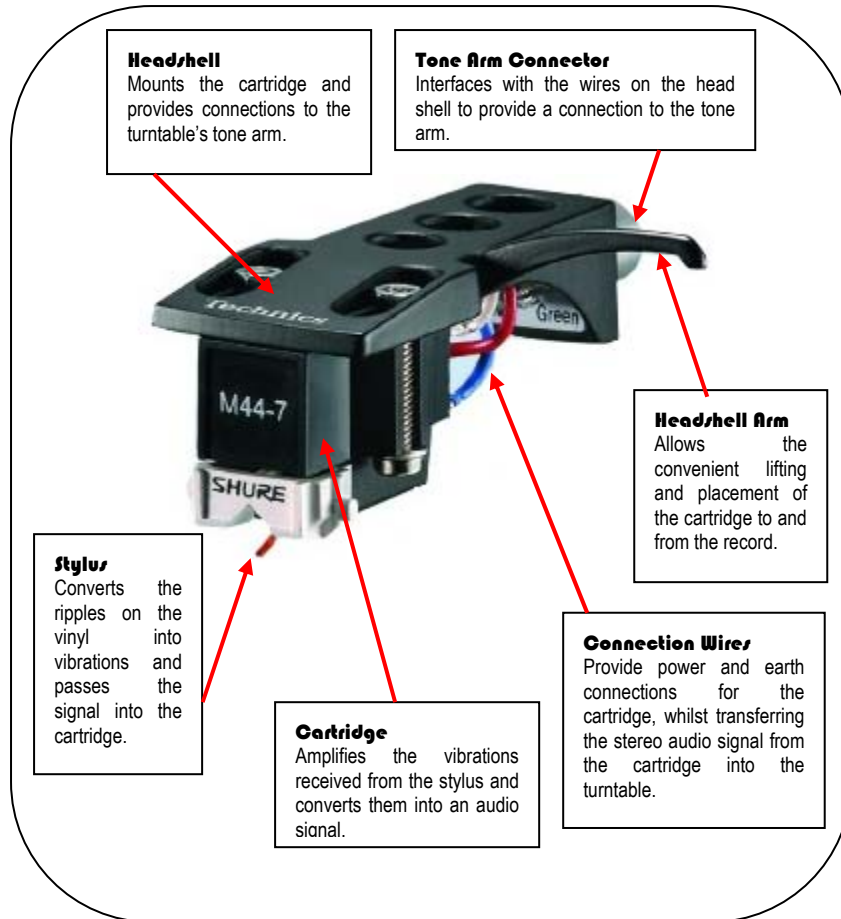


Cartridges & Stylus

The cartridge is a device that sits on the end of the tone arm and converts the vibrations of sound picked up from the stylus into a sound signal that can be played through an amplification device. As the record rotates on the turntable platter, the stylus sits in the grooves of the record, picking up ripples of sound pressed into either side of the record grooves, and vibrating as it passes. The lower frequencies of sound sit at the base of each groove, the higher frequencies at the top of the groove. These vibrations are transferred along the length of the stylus and into the cartridge where magnets amplify them. The subsequent audio signal is then transferred along the tone arm and out of the turntable ready for amplification.



There are many different types of cartridge available, some attach to the head shell of the tone arm (like the Shure M44-7a shown left), others affix directly to the end of the tone arm (like the Ortofon concorde). For turntablism, head shell mounted cartridges are generally preferable as they allow a certain amount of configuration by the user, such as the addition of extra weights to improve tracking.

The turntablists choice generally falls between Shure's M44-7 and Stanton's 505AL. The Stanton 505AL is a good beginner's cartridge that tracks well and offers reasonable sound quality at a competitive price. However, for the extra outlay, the Shure M44-7 provides the best combination of non-skippability, sound quality and lack of record wear.

Recommended Cartridge Settings*

	<u>Shure M44-7a</u>	<u>Stanton 500AL</u>
Turntable type:	<i>SL-1210 Mk.II</i>	<i>SL-1210 Mk.II</i>
Head shell type:	<i>Technics</i>	<i>Technics</i>
Tone Arm Height:	<i>4.5</i>	<i>3.5</i>
Anti-Skate:	<i>0 or 1</i>	<i>3</i>
Head shell Weight:	<i>None</i>	<i>2g weight</i>
Tone arm Weight:	<i>Normal, all the way in</i>	<i>Backwards, all the way in</i>
Head shell Position:	<i>Aligned flush to the top of the head shell.</i>	<i>2/3's of the way towards the front of the head shell slots.</i>

* Once the cartridge is configured, it is recommended that you leave it sitting stationary on a record overnight to allow the stylus to adjust to your tone arm configuration.